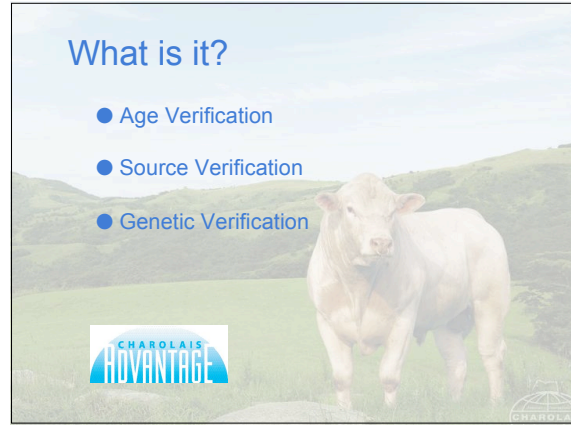




What is it?

- Age Verification
- Source Verification
- Genetic Verification



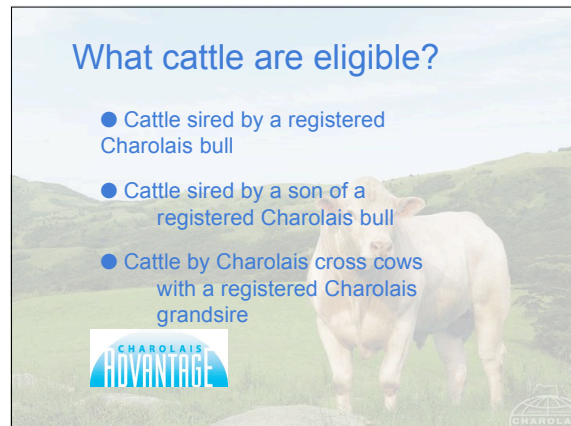
Source & age verification helps you...

- Prove you are doing what you say you are doing.
- Gain access to progressive marketing options.
- Make available third party evaluation vs. self-evaluation.



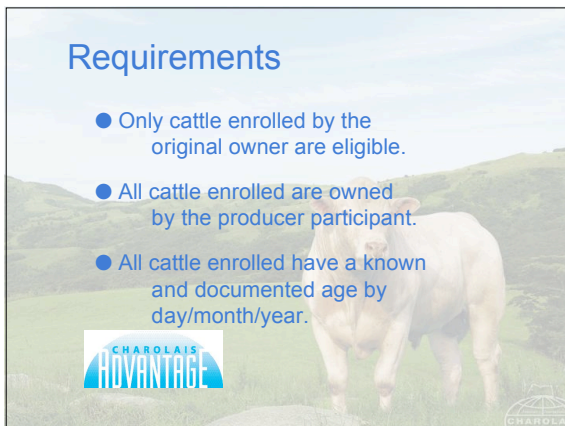
What cattle are eligible?

- Cattle sired by a registered Charolais bull
- Cattle sired by a son of a registered Charolais bull
- Cattle by Charolais cross cows with a registered Charolais grandsire



Requirements

- Only cattle enrolled by the original owner are eligible.
- All cattle enrolled are owned by the producer participant.
- All cattle enrolled have a known and documented age by day/month/year.



The Process

- Allow 3 weeks from time enrollment is received to arrival of tags.
- Request an enrollment packet from AICA.



The Process

- Return completed packet, calving documents and enrollment fee to AICA.
- Genetics are verified at AICA.



The Process

- IMI conducts a phone audit to verify the information.
- Once approved, tags are ordered and shipped to producer.



Tags

- Visual tags and nested pairs are available.
- All program tags are shipped directly to producer from Allflex.
- Visual tags are \$1.25 each nested pairs are \$3.50 each.



Contact the AICA office or your area fieldman for more information.