


Title of Presentation

Date of Presentation

Author of Presentation




IRISH CATTLE BREEDING FEDERATION

Beef Cattle Breeding in Ireland - data collection through an integrated database

Brian Wickham
Chief Executive, ICBF.

BIF Conference – Bozeman, Montana, USA
Thursday 2nd June 2011



Transforming Ireland

© Irish Cattle Breeding Federation Ltd 2011

Content

- Background
 - Industry
 - Organisation structure
- What do Irish beef farmers want?
- ICBF database
- Information outputs
- Progress
- Priorities

© Irish Cattle Breeding Federation Ltd 2011

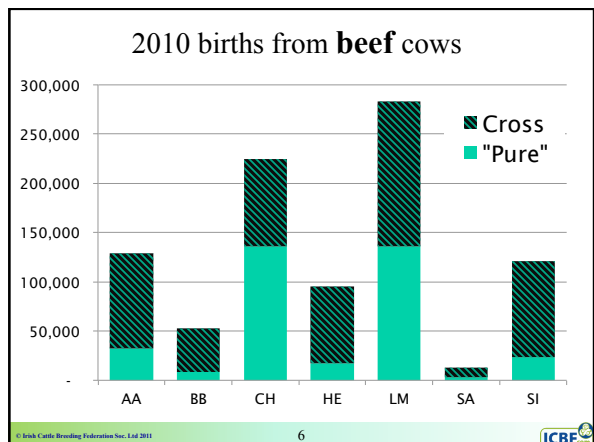
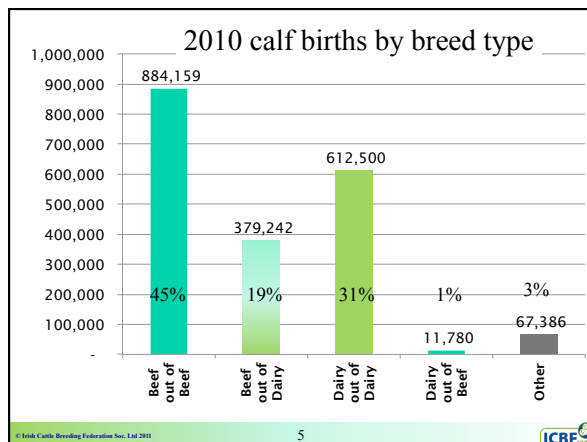
OUR BEEF INDUSTRY

© Irish Cattle Breeding Federation Ltd 2011

Our Cattle Industry

- 1.1 million dairy cows
 - 30% of dairy cows mated to beef bulls
- 0.9 million suckler cows
 - Large amount of cross breeding
 - Many small herds (<10 cows) and few large herds
 - 22% replacement rate
 - 16% live exports to mostly EU countries
 - 62% slaughtered in Ireland mostly for export as cuts
 - Poor economic margins

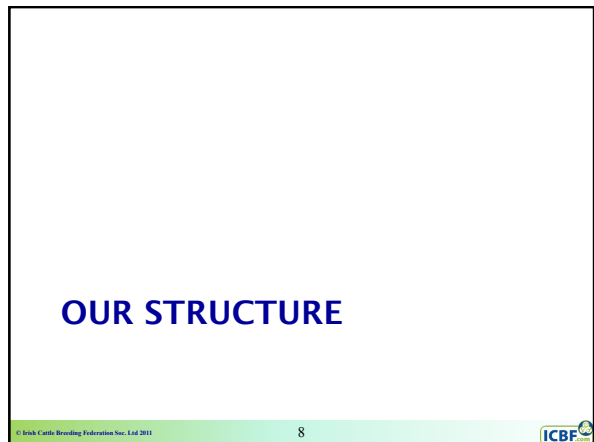
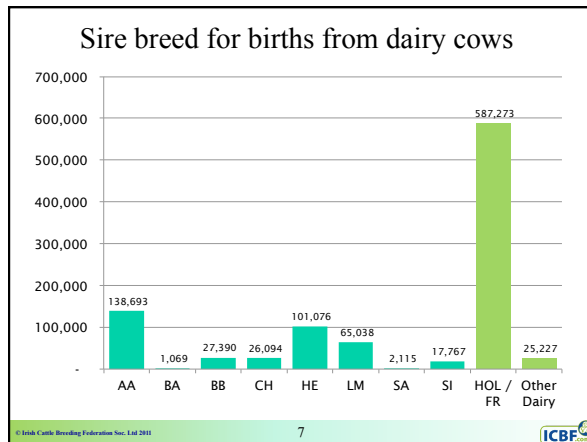
© Irish Cattle Breeding Federation Ltd 2011



Title of Presentation

Date of Presentation

Author of Presentation



Irish Cattle Breeding Federation Society Limited (ICBF)

- Established with interim Board in 1997
- Commenced operations in 1998
- Current structure in 2000
- Mission: achieving the greatest possible genetic improvement in the national cattle herd - Dairy and Beef

© Irish Cattle Breeding Federation Soc. Ltd 2011

MEMBERS, BOARD & SHARES - ICBF

Stakeholders in cattle breeding control decision making.

© Irish Cattle Breeding Federation Soc. Ltd 2011

WHAT IRISH BEEF FARMERS WANT

© Irish Cattle Breeding Federation Soc. Ltd 2011

What do Irish farmers want?

Dairy Breeding Objective	Beef Breeding Objective
<ul style="list-style-type: none">Income (€) ++++Milk (protein, fat, - lactose, - water)MeatSurplus animalsBreeding stock	<ul style="list-style-type: none">Income (€) ++++MeatWeanersBreeding stock
<ul style="list-style-type: none">Expense (€) -----Grass & purchased feedReplacementsHealthLabour	<ul style="list-style-type: none">Expense (€) -----Grass & purchased feedReplacementsHealthLabour
<ul style="list-style-type: none">Profit = Income - Expense	<ul style="list-style-type: none">Profit = Income - Expense

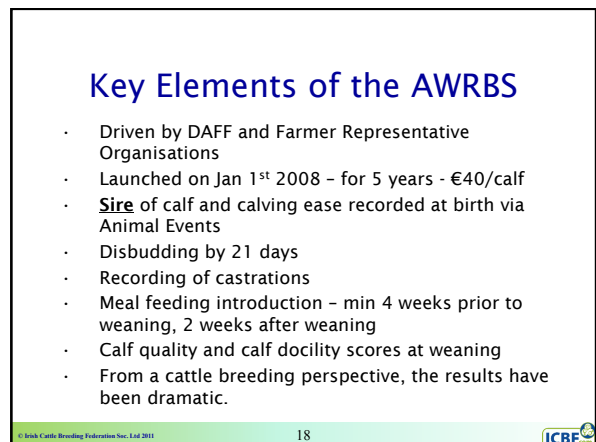
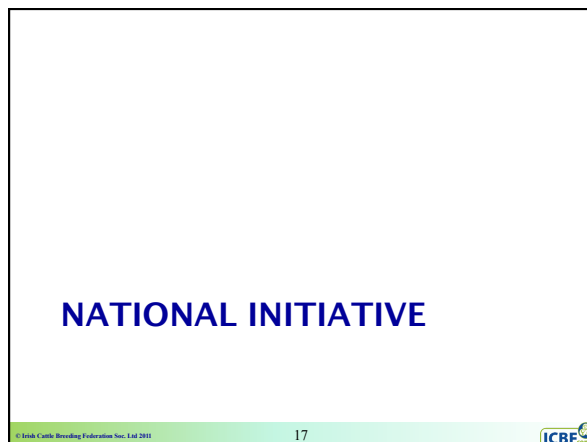
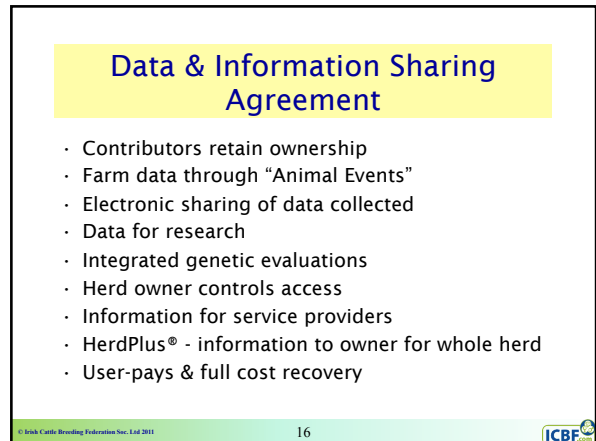
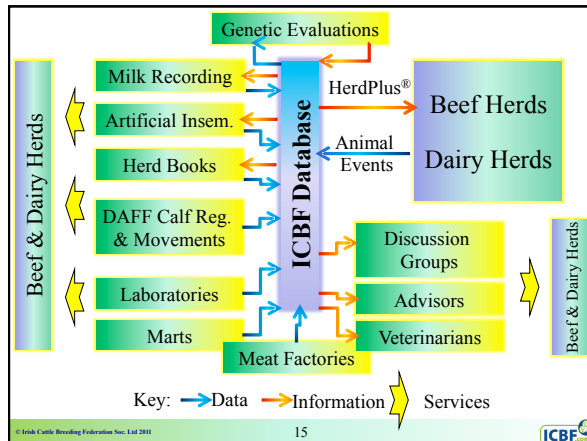
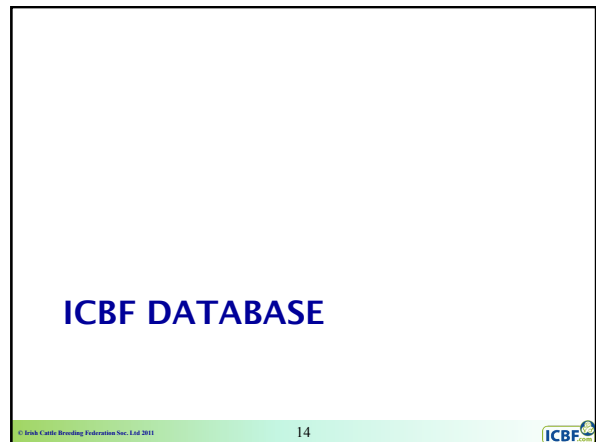
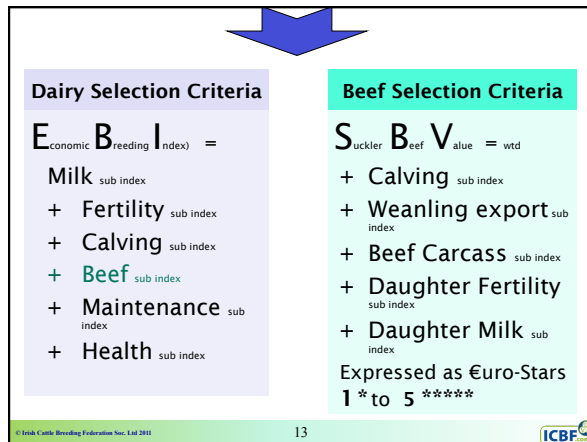
© Irish Cattle Breeding Federation Soc. Ltd 2011



Title of Presentation

Date of Presentation

Author of Presentation



Title of Presentation

Date of Presentation

Author of Presentation

CARCASS DATA

© Irish Cattle Breeding Federation Ltd 2011

19



Mechanical Grading (VIA)

VBS2000 (E+V, Germany)

- Approved since 2001 for EUROP beef grading in Ireland
- 2D + 3D image/carcass
- Used in 26 slaughter houses across Ireland
- Images stored at ICBF since July 2005

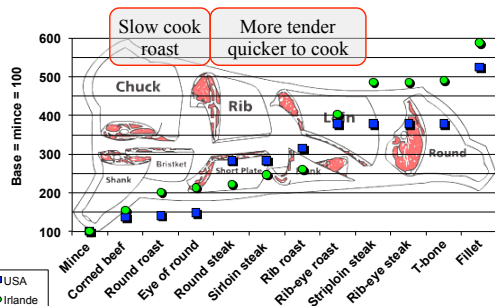


© Irish Cattle Breeding Federation Ltd 2011

20



Variation in cut values



Source: 2 commercial butcher price list downloaded April 2011

© Irish Cattle Breeding Federation Ltd 2011

21

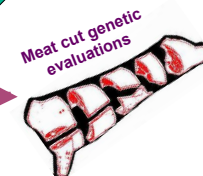


The Plan



E+V grading machine
~ 428 variables

Conf.	Fat
E	1
U	2
R	3
O	4
P	5



Type of data = linear measurements, surface, volume, contour, colour

© Irish Cattle Breeding Federation Ltd 2011

22



PUBLIC BREEDING INFORMATION

© Irish Cattle Breeding Federation Ltd 2011

23



IRISH CATTLE BREEDING FEDERATION

Title of Presentation

Date of Presentation

Author of Presentation

Irish Cattle Breeding Federation

Striving to achieve the greatest possible genetic improvement in the national cattle herd for the benefit of Irish farmers, the dairy and beef industries & members. [Learn more about ICBF](#)

Home Services News & Publications About ICBF

Active Bull Lists

Dairy **Beef**

Current List Current List

2010 Autumn 2010 (Pdf, Excel)
Support Material: [Guide, Review and Analysis](#)
Spring 2010 (Pdf, Excel)
Support Material: [Guide, Review and Analysis](#)

2009 Autumn 2009 (Excel) Spring 2009 (Excel file)
All Active Dairy Bulls Autumn 2009 (Excel)

© Irish Cattle Breeding Federation Ltd 2011 25 ICBF

Beef

View as Excel

Evaluation Date Dec 2010

Tag	Bull Name	Breed	Suckler Beef Value € Star	Rel	Weaning Export € Star	Rel	Beef Carcass € Star	Rel	Daughter Milk € Star	Rel	Daughter Fertility Value Star	Rel	Calv Diff Value Star	Rel	Doc Value Star	Rel	Supplier	Price	Avail
NFU	NETHERTON FLEUR'S LEGACY	AA	€ 138	37%	€ 60	41%	€ 57	32%	€ 141	12%	2.4	65%	0.3	44%	ICBC	40	Medium		
RWB	RAWBURN LORD ROCKET F609	AA	€ 113	68%	€ 17	63%	€ 17	58%	€ 304	12%	5.7	94%	0.7	75%	Dovea	8	High		

Evaluation Date: Dec 2010

Tag	Bull Name	Breed	Suckler Beef Value € Star	Rel	Weaning Export € Star	Rel	Beef Carcass € Star	Rel
NFU	NETHERTON FLEUR'S LEGACY	AA	€ 138	37%	€ 60	41%	€ 57	32%
RWB	RAWBURN LORD ROCKET F609	AA	€ 113	68%	€ 17	63%	€ 17	58%

© Irish Cattle Breeding Federation Ltd 2011 26 ICBF

Beef Bull Euro-Star Evaluation

ICBF Genetic Evaluations Service

Search Again

Euro-Star Rating (ICBF, April 2010)

AI Code: CF52 Breed: CH (100%) Sire: HERMES J HIRE
Animal Name: DOONALLY NEW Owner: NATIONAL CATTLE BREEDING CNTR Dam: INTRUSE / 7193100567
Date of Birth: 18-JAN-1997 Date of Evaluation: April 2010 MGS: CAMPAGHARD / 1987109938
National ID: CHLFR4M007197126709

% Rank	Star Rating (within breed)	Index and Traits	Euro-Value	% Rank
94%	★★★★★	Suckler Beef Value (SBV)	€131	94%
98%	★★★★★	Weaning Export	€108	99%
99%	★★★★★	Beef Carcass	€176	99%
1%	★	Daughter Fertility	-6.81	1%
1%	★	Daughter Milk	-6.121	1%

Other Key Traits

% Rank	Star Rating	Trait	Value	% Rank
11%	★	Calving Difficulty (% 3 or 4)	11.28%	5%
99%	★★★★★	Gestation Length (Days)	79 Days	78%
92%	★★★★★	Docility (1-5 score)	0.14	93%

Data Reliability: 40% = 60% = Average 20 - 40% = Below Average < 20% = Poor

Overall Index – SBV in €
Sub Indexes – in €
Key traits phenotype units

© Irish Cattle Breeding Federation Ltd 2011 27 ICBF

PRIVATE HERD INFORMATION

HERDPLUS® - USER PAY SERVICE FROM ICBF

© Irish Cattle Breeding Federation Ltd 2011 28 ICBF

HerdPlus®

What is Herdplus®?

- Cattle Breeding Information Service
- Provides reports to Beef (& Dairy) Farmers

What is so special about these reports?

- You can compare your Herd against National Av. Figures
- Reports are designed by Farmers for Farmers

How do I send in information for my herd?

- Register all calves through Animal Events

How much does it cost?

- €60/year – electronic, €120/year – postal

© Irish Cattle Breeding Federation Ltd 2011 29 ICBF

HerdPlus® Beef Products

CALVING REPORT

NITRATES REPORT

SLAUGHTER REPORT

INBREEDING CHECKER

EURO-STAR REPORT

EURO-STAR CATALOGUE

SUCKLER COW REPORT

DIRECT HELPLINE TO ICBF STAFF

Herd Management Tools For Increasing Profit

© Irish Cattle Breeding Federation Ltd 2011 ICBF



Title of Presentation

Date of Presentation

Author of Presentation

Suckler Cow Report

Animal Details		Ancestry Details		Euro-Star Index	
Animal ID: 350	Official Tag: IE00110406080	Sire's Sire: CHIC DUNROBIN HALLMARK 100 X 10	Sire's Dam: GLODYS19	With Breed: Suckler Beef Value	Index: 127 36% ****
Animal Name: BALLYVILLE PLUS 1 (X)	Date of Birth: 24/03/2001	Sire's Dam: AUGHMAREE DAISY	Bre: GLC00129	Beef Value	6.43 37% ****
Breed: HE (100%)	Hardbook: Pedigree Registered	Dam: IEJL020159	Dam's Sire: GLODYS19	Beef Carcass	6.43 36% **
Registered	Scored: 100	Dam's Dam: BALLYVILLE NELLIE	Dam's Sire: GLODYS19	Replacement Value	6.68 ****
BLUP Index (Reliability 32%)	MUSCLE: 122	Dam's Dam: GLODYS19	Dam's Sire: GLODYS19	Daughter Fertility	6.154 42% ****
SKELETAL: 0.21	DOCILITY: 100	Dam's Dam: GLODYS19	Dam's Sire: GLODYS19	Daughter Milk	6.154 42% ****
Calving & Fertility Performance		Weaning & Carcass Performance		Other Key Traits	
Calving Date	Tag Number	Calving Survey	Calving Interval Sec	Current Status	Size
1 1/11/2003	IE00110406080	344	F	Dead	50083 HE
2 2/11/2004	IE00110406080	344	F	Dead	50083 HE
3 3/11/2005	IE00110406080	344	F	Dead	50083 HE
4 4/11/2006	IE00110406080	344	F	Dead	50083 HE
5 5/11/2007	IE00110406080	344	F	Dead	50083 HE
6 6/11/2008	IE00110406080	344	F	Dead	50083 HE
7 7/11/2009	IE00110406080	344	F	Dead	50083 HE
8 8/11/2010	IE00110406080	344	F	Dead	50083 HE
9 9/11/2011	IE00110406080	344	F	Dead	50083 HE
10 10/11/2012	IE00110406080	344	F	Dead	50083 HE
11 11/11/2013	IE00110406080	344	F	Dead	50083 HE
12 12/11/2014	IE00110406080	344	F	Dead	50083 HE
13 13/11/2015	IE00110406080	344	F	Dead	50083 HE
14 14/11/2016	IE00110406080	344	F	Dead	50083 HE
15 15/11/2017	IE00110406080	344	F	Dead	50083 HE
16 16/11/2018	IE00110406080	344	F	Dead	50083 HE
17 17/11/2019	IE00110406080	344	F	Dead	50083 HE
18 18/11/2020	IE00110406080	344	F	Dead	50083 HE
19 19/11/2021	IE00110406080	344	F	Dead	50083 HE
20 20/11/2022	IE00110406080	344	F	Dead	50083 HE
21 21/11/2023	IE00110406080	344	F	Dead	50083 HE
22 22/11/2024	IE00110406080	344	F	Dead	50083 HE
23 23/11/2025	IE00110406080	344	F	Dead	50083 HE
24 24/11/2026	IE00110406080	344	F	Dead	50083 HE
25 25/11/2027	IE00110406080	344	F	Dead	50083 HE
26 26/11/2028	IE00110406080	344	F	Dead	50083 HE
27 27/11/2029	IE00110406080	344	F	Dead	50083 HE
28 28/11/2030	IE00110406080	344	F	Dead	50083 HE
29 29/11/2031	IE00110406080	344	F	Dead	50083 HE
30 30/11/2032	IE00110406080	344	F	Dead	50083 HE
31 31/11/2033	IE00110406080	344	F	Dead	50083 HE
32 32/11/2034	IE00110406080	344	F	Dead	50083 HE
33 33/11/2035	IE00110406080	344	F	Dead	50083 HE
34 34/11/2036	IE00110406080	344	F	Dead	50083 HE
35 35/11/2037	IE00110406080	344	F	Dead	50083 HE
36 36/11/2038	IE00110406080	344	F	Dead	50083 HE
37 37/11/2039	IE00110406080	344	F	Dead	50083 HE
38 38/11/2040	IE00110406080	344	F	Dead	50083 HE
39 39/11/2041	IE00110406080	344	F	Dead	50083 HE
40 40/11/2042	IE00110406080	344	F	Dead	50083 HE
41 41/11/2043	IE00110406080	344	F	Dead	50083 HE
42 42/11/2044	IE00110406080	344	F	Dead	50083 HE
43 43/11/2045	IE00110406080	344	F	Dead	50083 HE
44 44/11/2046	IE00110406080	344	F	Dead	50083 HE
45 45/11/2047	IE00110406080	344	F	Dead	50083 HE
46 46/11/2048	IE00110406080	344	F	Dead	50083 HE
47 47/11/2049	IE00110406080	344	F	Dead	50083 HE
48 48/11/2050	IE00110406080	344	F	Dead	50083 HE
49 49/11/2051	IE00110406080	344	F	Dead	50083 HE
50 50/11/2052	IE00110406080	344	F	Dead	50083 HE
51 51/11/2053	IE00110406080	344	F	Dead	50083 HE
52 52/11/2054	IE00110406080	344	F	Dead	50083 HE
53 53/11/2055	IE00110406080	344	F	Dead	50083 HE
54 54/11/2056	IE00110406080	344	F	Dead	50083 HE
55 55/11/2057	IE00110406080	344	F	Dead	50083 HE
56 56/11/2058	IE00110406080	344	F	Dead	50083 HE
57 57/11/2059	IE00110406080	344	F	Dead	50083 HE
58 58/11/2060	IE00110406080	344	F	Dead	50083 HE
59 59/11/2061	IE00110406080	344	F	Dead	50083 HE
60 60/11/2062	IE00110406080	344	F	Dead	50083 HE
61 61/11/2063	IE00110406080	344	F	Dead	50083 HE
62 62/11/2064	IE00110406080	344	F	Dead	50083 HE
63 63/11/2065	IE00110406080	344	F	Dead	50083 HE
64 64/11/2066	IE00110406080	344	F	Dead	50083 HE
65 65/11/2067	IE00110406080	344	F	Dead	50083 HE
66 66/11/2068	IE00110406080	344	F	Dead	50083 HE
67 67/11/2069	IE00110406080	344	F	Dead	50083 HE
68 68/11/2070	IE00110406080	344	F	Dead	50083 HE
69 69/11/2071	IE00110406080	344	F	Dead	50083 HE
70 70/11/2072	IE00110406080	344	F	Dead	50083 HE
71 71/11/2073	IE00110406080	344	F	Dead	50083 HE
72 72/11/2074	IE00110406080	344	F	Dead	50083 HE
73 73/11/2075	IE00110406080	344	F	Dead	50083 HE
74 74/11/2076	IE00110406080	344	F	Dead	50083 HE
75 75/11/2077	IE00110406080	344	F	Dead	50083 HE
76 76/11/2078	IE00110406080	344	F	Dead	50083 HE
77 77/11/2079	IE00110406080	344	F	Dead	50083 HE
78 78/11/2080	IE00110406080	344	F	Dead	50083 HE
79 79/11/2081	IE00110406080	344	F	Dead	50083 HE
80 80/11/2082	IE00110406080	344	F	Dead	50083 HE
81 81/11/2083	IE00110406080	344	F	Dead	50083 HE
82 82/11/2084	IE00110406080	344	F	Dead	50083 HE
83 83/11/2085	IE00110406080	344	F	Dead	50083 HE
84 84/11/2086	IE00110406080	344	F	Dead	50083 HE
85 85/11/2087	IE00110406080	344	F	Dead	50083 HE
86 86/11/2088	IE00110406080	344	F	Dead	50083 HE
87 87/11/2089	IE00110406080	344	F	Dead	50083 HE
88 88/11/2090	IE00110406080	344	F	Dead	50083 HE
89 89/11/2091	IE00110406080	344	F	Dead	50083 HE
90 90/11/2092	IE00110406080	344	F	Dead	50083 HE
91 91/11/2093	IE00110406080	344	F	Dead	50083 HE
92 92/11/2094	IE00110406080	344	F	Dead	50083 HE
93 93/11/2095	IE00110406080	344	F	Dead	50083 HE
94 94/11/2096	IE00110406080	344	F	Dead	50083 HE
95 95/11/2097	IE00110406080	344	F	Dead	50083 HE
96 96/11/2098	IE00110406080	344	F	Dead	50083 HE
97 97/11/2099	IE00110406080	344	F	Dead	50083 HE
98 98/11/2100	IE00110406080	344	F	Dead	50083 HE
99 99/11/2101	IE00110406080	344	F	Dead	50083 HE
100 100/11/2102	IE00110406080	344	F	Dead	50083 HE
101 101/11/2103	IE00110406080	344	F	Dead	50083 HE
102 102/11/2104	IE00110406080	344	F	Dead	50083 HE
103 103/11/2105	IE00110406080	344	F	Dead	50083 HE
104 104/11/2106	IE00110406080	344	F	Dead	50083 HE
105 105/11/2107	IE00110406080	344	F	Dead	50083 HE
106 106/11/2108	IE00110406080	344	F	Dead	50083 HE
107 107/11/2109	IE00110406080	344	F	Dead	50083 HE
108 108/11/2110	IE00110406080	344	F	Dead	50083 HE
109 109/11/2111	IE00110406080	344	F	Dead	50083 HE
110 110/11/2112	IE00110406080	344	F	Dead	50083 HE
111 111/11/2113	IE00110406080	344	F	Dead	50083 HE
112 112/11/2114	IE00110406080	344	F	Dead	50083 HE
113 113/11/2115	IE00110406080	344	F	Dead	50083 HE
114 114/11/2116	IE00110406080	344	F	Dead	50083 HE
115 115/11/2117	IE00110406080	344	F	Dead	50083 HE
116 116/11/2118	IE00110406080	344	F	Dead	50083 HE
117 117/11/2119	IE00110406080	344	F	Dead	50083 HE
118 118/11/2120	IE00110406080	344	F	Dead	50083 HE
119 119/11/2121	IE00110406080	344	F	Dead	50083 HE
120 120/11/2122	IE00110406080	344	F	Dead	50083 HE
121 121/11/2123	IE00110406080	344	F	Dead	50083 HE
122 122/11/2124	IE00110406080	344	F	Dead	50083 HE
123 123/11/2125	IE00110406080	344	F	Dead	50083 HE
124 124/11/2126	IE00110406080	344	F	Dead	50083 HE
125 125/11/2127	IE00110406080	344	F	Dead	50083 HE
126 126/11/2128	IE00110406080	344	F	Dead	50083 HE
127 127/11/2129	IE00110406080	344	F	Dead	50083 HE
128 128/11/2130	IE00110406080	344	F	Dead	50083 HE
129 129/11/2131	IE00110406080	344	F	Dead	50083 HE
130 130/11/2132	IE00110406080	344	F	Dead	50083 HE
131 131/11/2133	IE00110406080	344	F	Dead	50083 HE
132 132/11/2134	IE00110406080	344	F	Dead	50083 HE
133 133/11/2135	IE00110406080	344	F	Dead	50083 HE
134 134/11/2136	IE00110406080	344	F	Dead	50083 HE
135 135/11/2137	IE00110406080	344	F	Dead	50083 HE
136 136/11/2138	IE00110406080	344	F	Dead	50083 HE
137 137/11/2139	IE00110406080	344	F	Dead	50083 HE
138 138/11/2140	IE00110406080	344	F	Dead	50083 HE
139 139/11/2141	IE00110406080	344	F	Dead	50083 HE
140 140/11/2142	IE00110406080	344	F	Dead	50083 HE
141 141/11/2143	IE00110406080	344	F	Dead	50083 HE
142 142/11/2144	IE00110406080	344	F	Dead	50083 HE
143 143/11/2145	IE00110406080	344	F	Dead	50083 HE
144 144/11/2146	IE00110406080	344	F	Dead	50083 HE
145 145/11/2147	IE00110406080	344	F	Dead	50083 HE
146 146/11/2148	IE00110406080	344	F	Dead	50083 HE
147 147/11/2149	IE00110406080	344	F	Dead	

Title of Presentation

Date of Presentation

Author of Presentation

FUTURE PRIORITIES

© Irish Cattle Breeding Federation Ltd 2011

37



Key areas to progress further

- Increase the number of **live-weight** records
- Develop integration with **disease testing** laboratories to assist with disease control
- Information quality index based on timeliness, completeness and deviations from normality is under active consideration as a tool to **improve data quality**

© Irish Cattle Breeding Federation Ltd 2011

38



In Summary....

- A central cattle breeding database has removed duplication across the cattle breeding industry and provides a platform to improve farm profitability through breeding
- A supportive DAFF has helped create a synergy between regulatory data and cattle breeding
- Creating a culture of sharing of data across the industry removes duplication and cost, and increases value for farmers & the breeding industry

© Irish Cattle Breeding Federation Ltd 2011

39



IRISH CATTLE BREEDING FEDERATION